

공무원연금공단

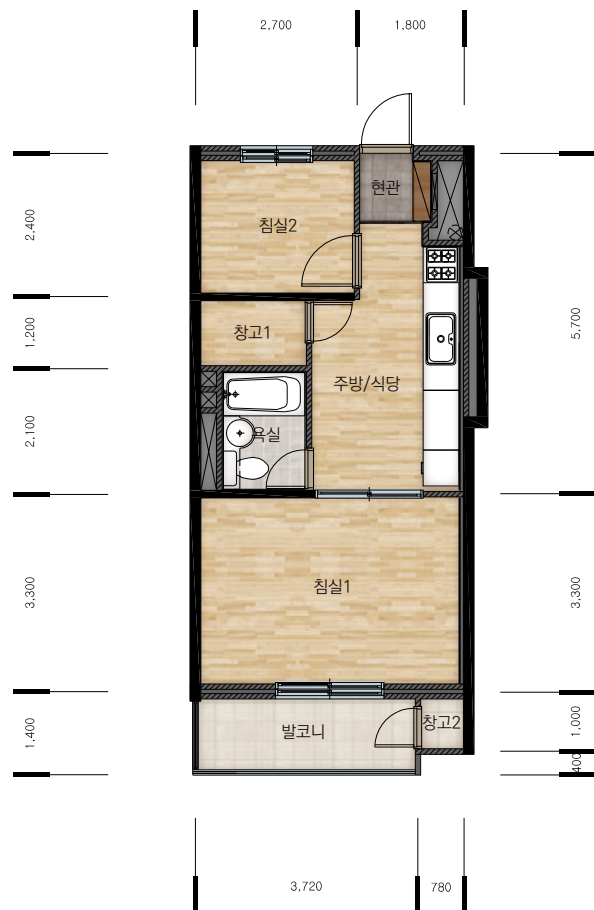
공무원임대주택

단위세대 평면이미지



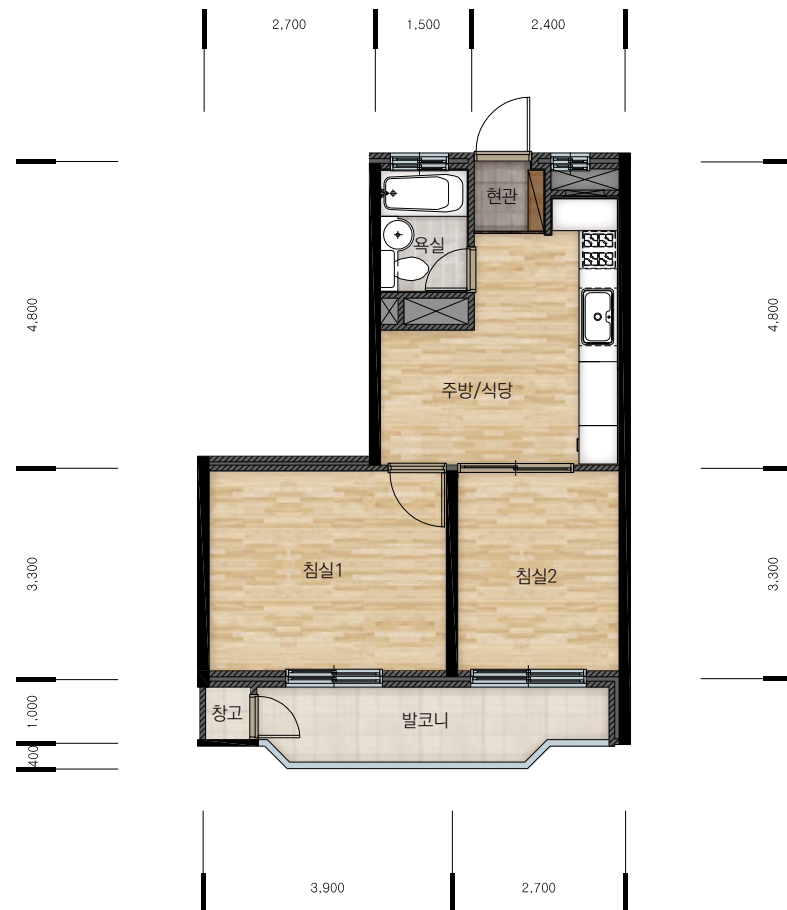
공무원연금공단

41m² A형



1502, 1504, 1507, 1511, 1512동 5~8호

41m² B형



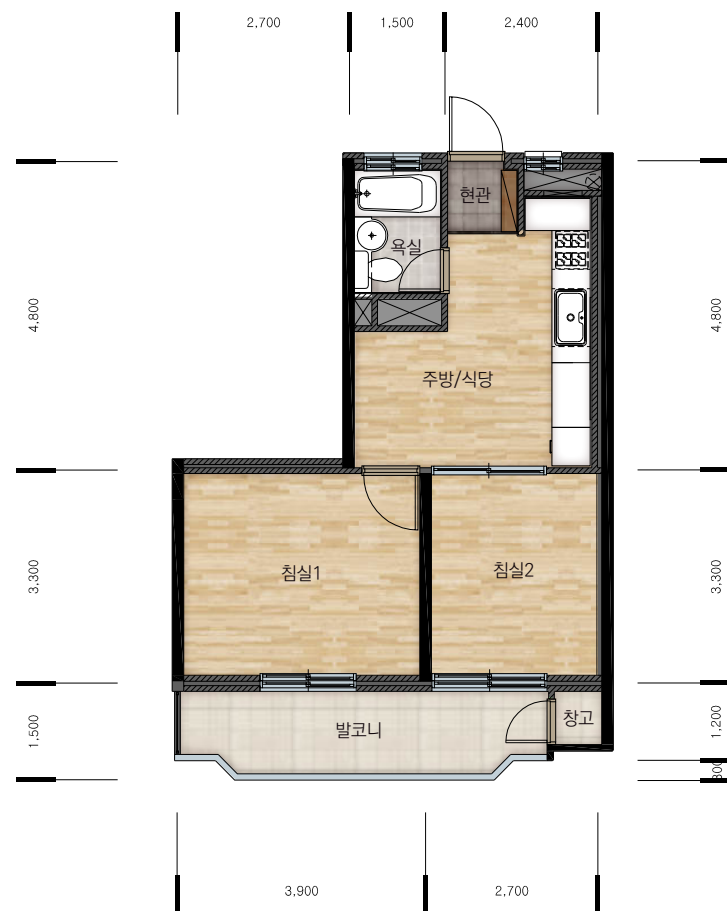
1502, 1504, 1507, 1511, 1512동 4, 9호

41m² C형



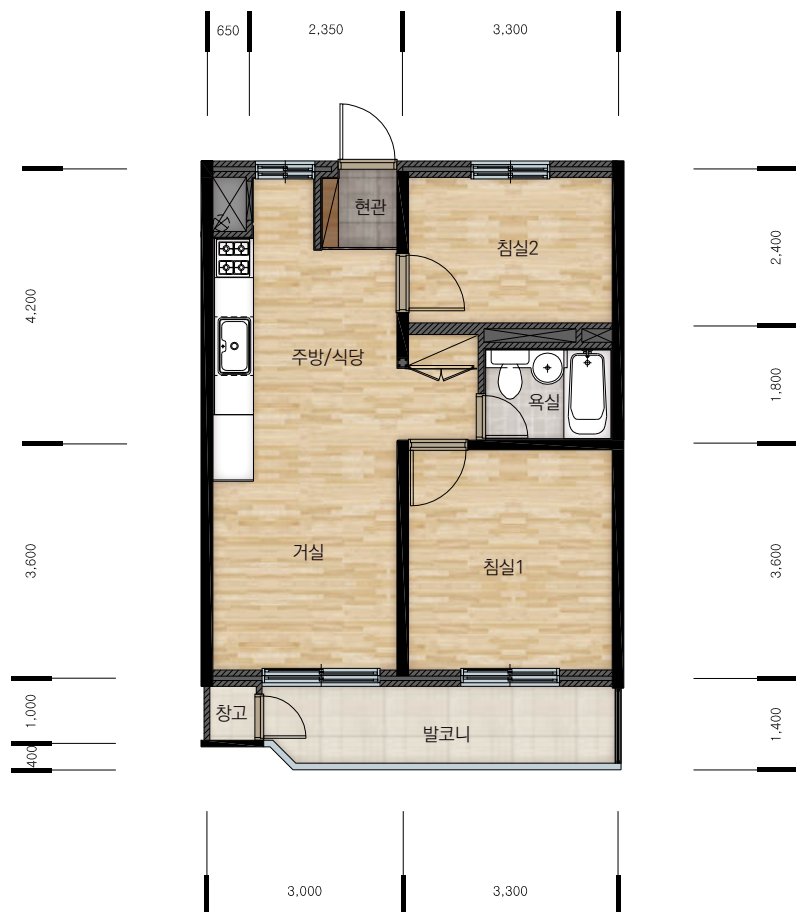
1503, 1508, 1509, 1510동 5~10호

41m² D형



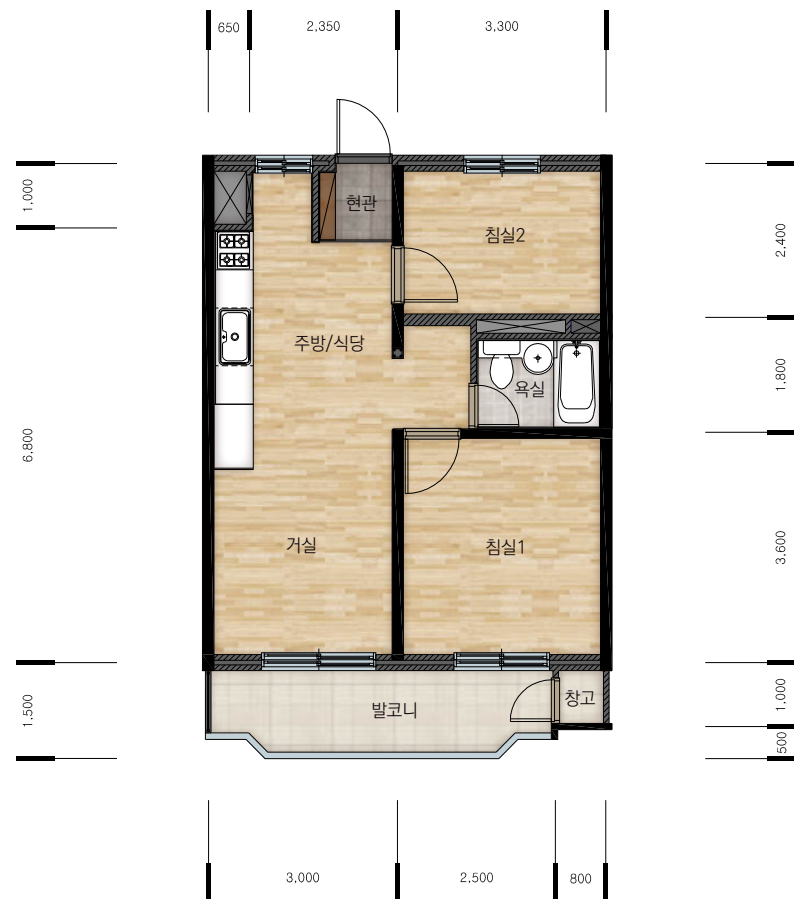
1501, 1505, 1506동 4, 5호

49m² A형



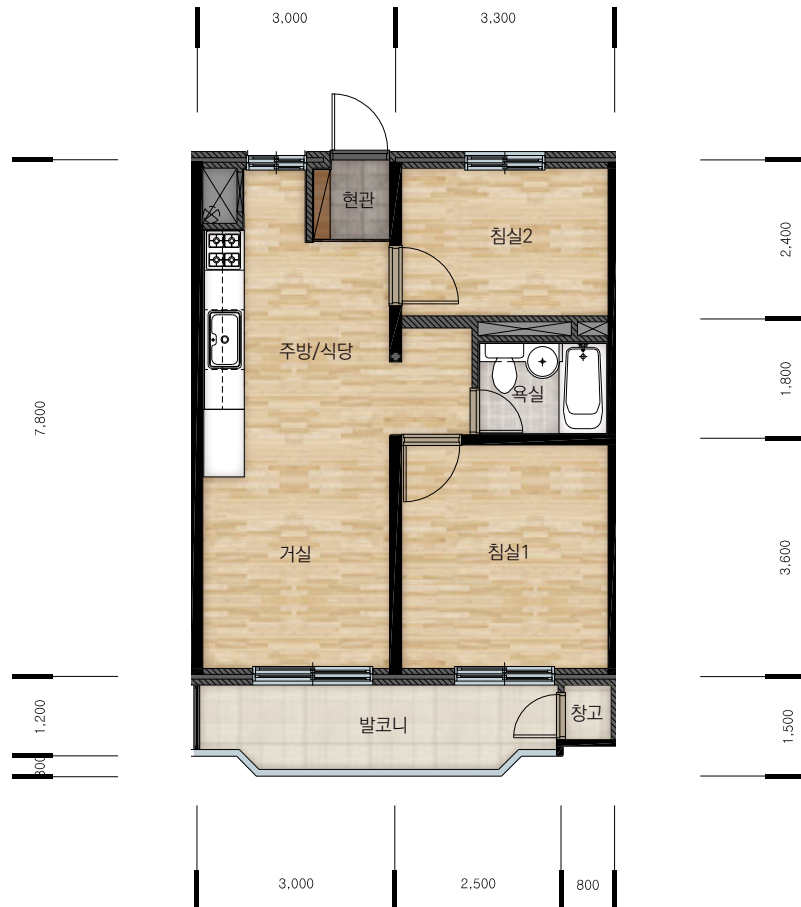
1502, 1504, 1507, 1511, 1512동 1~3, 10~12호

49m² B형



1503, 1508, 1509, 1510동 1~4, 11~14호

49m² C형



1501, 1505, 1506동 1~3, 6~8호

공 무 원 연 금 공 단

공무원임대주택

단위세대 평면이미지



공무원연금공단